

Crowdabout Creek Watershed Project



**Performed by the:
Flint Creek Watershed Conservancy District
Morgan County Soil and Water Conservation District**

State Soil and Water Conservation Committee

67 Soil and Water Conservation Districts

A governmental subdivision of the state of Alabama, organized according to the Soil Conservation District Law.

Specific responsibility is management of soil and water resources. The idea behind their formation is to keep decision-making on soil and water conservation matters at the local level. Each district is governed by a board of five Supervisors. Each of Alabama's 67 counties has a SWCD.

Purpose includes:

Control and prevention of soil erosion, prevention of damage from flood water and sediment, utilization and disposal of water, wise guidance in present and future use of state's land resources.

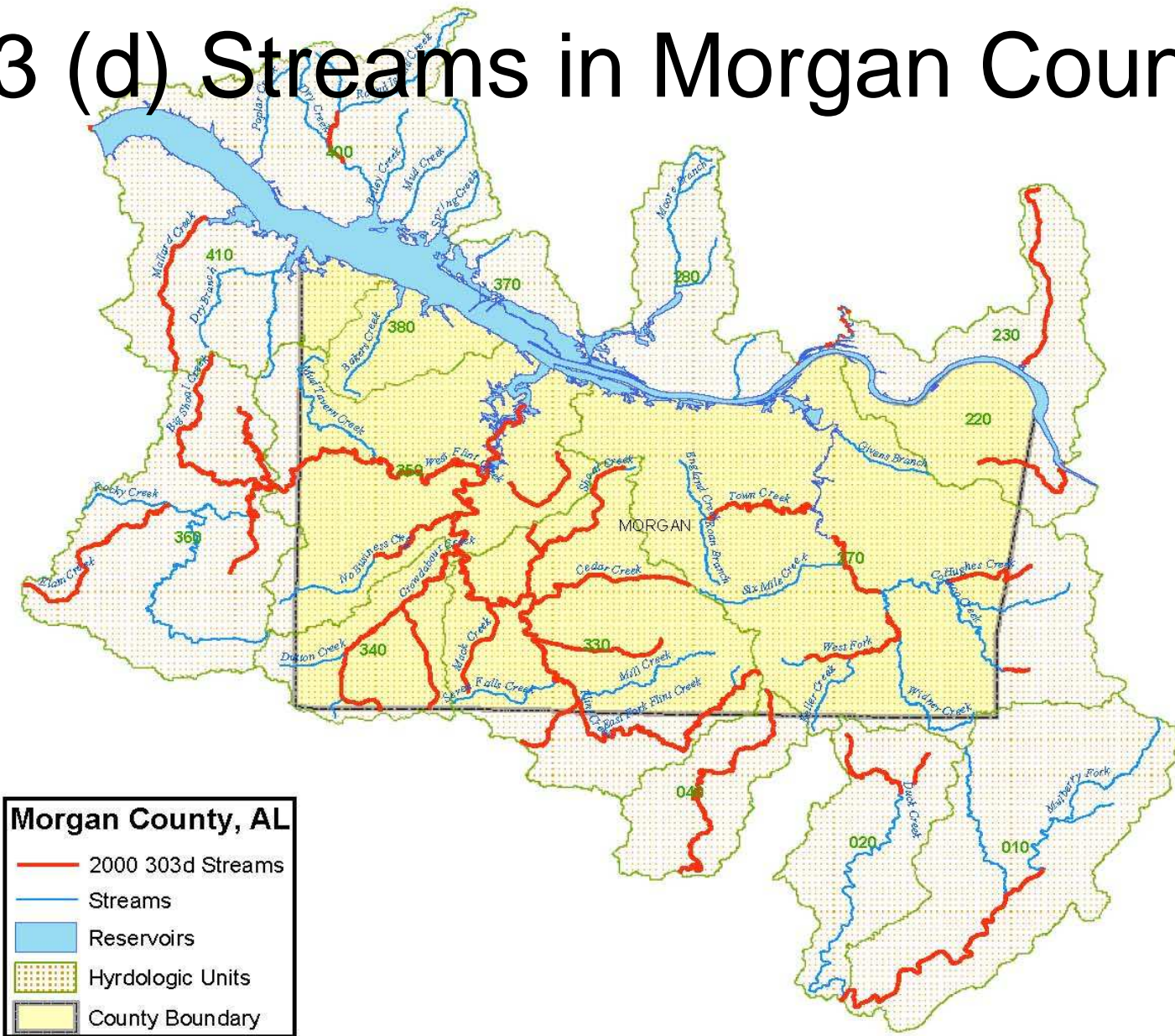
Soil surveys, erosion control practices, soil fertility and condition, land and water management, landscape beautification, education and involvement of citizens in conservation programs.

**Field Guide
For
Erosion and Sediment Control
On Construction Sites
In
Alabama**

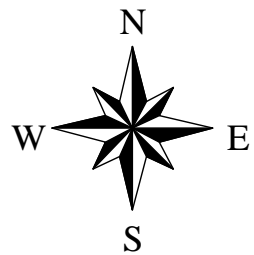
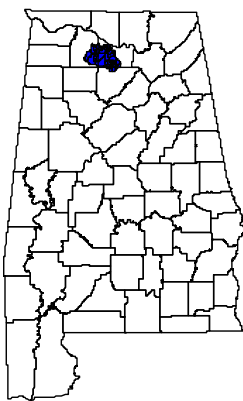
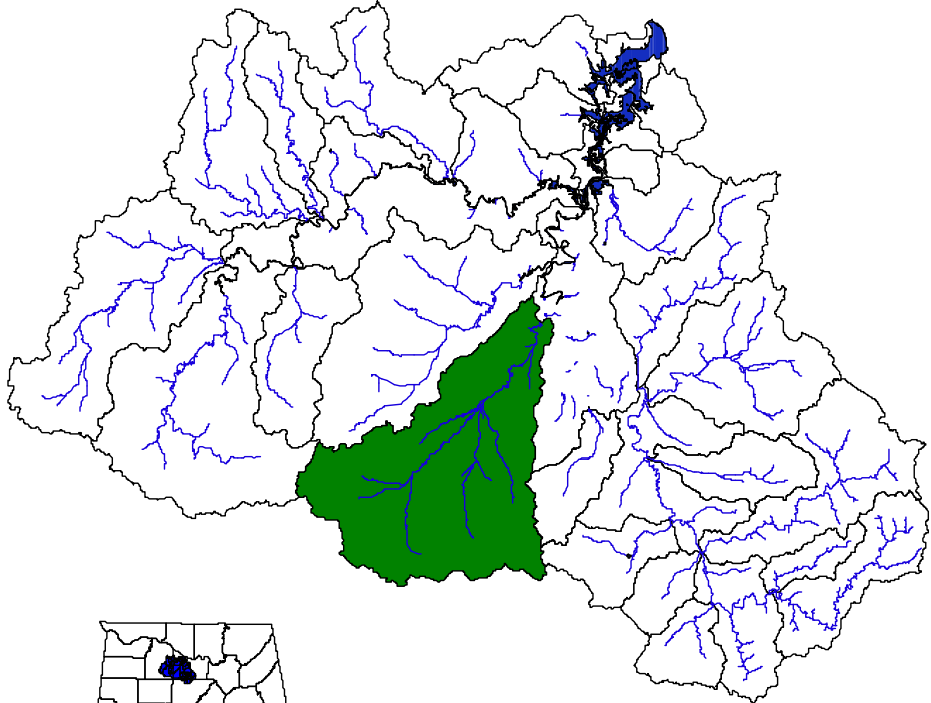
**Alabama Soil and Water
Conservation Committee
and
Partners**

Second Edition, June 2015

303 (d) Streams in Morgan County



Crowdabout Creek Watershed within the Flint Creek Watershed



Description

- 31,150 Acres
- Crowdabout Creek is 15 miles long, Herrin Creek 6.3 miles long
- Flows into Flint Creek, then into the Tennessee River
- Forty percent of landuse is agriculture (excluding forestry)
- No point sources

Why Project Was Needed

- Crowdabout Creek and Herrin Creek listed on the 303(d) list for: Nutrients, siltation, and organic enrichment/dissolved oxygen from nonirrigated crop production, pasture grazing and animal feeding operations.



A photograph of a creek flowing through a rural landscape. The creek is the central focus, winding from the foreground towards the background. The water is calm and reflects the surrounding greenery. On the left bank, there are several large, leafy trees. The right bank is covered in tall grass and some shrubs. In the distance, a line of trees marks the horizon under a pale sky. The overall scene is peaceful and natural.

History of Crowdabout Creek

First Named Scroungeabout
Creek

1950's Channelization Project



Goals of the Crowdabout Creek Watershed Project

Develop and implement a watershed based plan to specifically target nonpoint source pollutants such as nitrogen, phosphorus and sediment loading

Enhance and protect water quality in the watershed

Remove Crowdabout Creek from the Section 303(d) list of impaired waters

IDENTIFY PROBLEMS



Lagoon Overflows





FEEDING AREAS



Streambank Erosion

Livestock Access To Streams



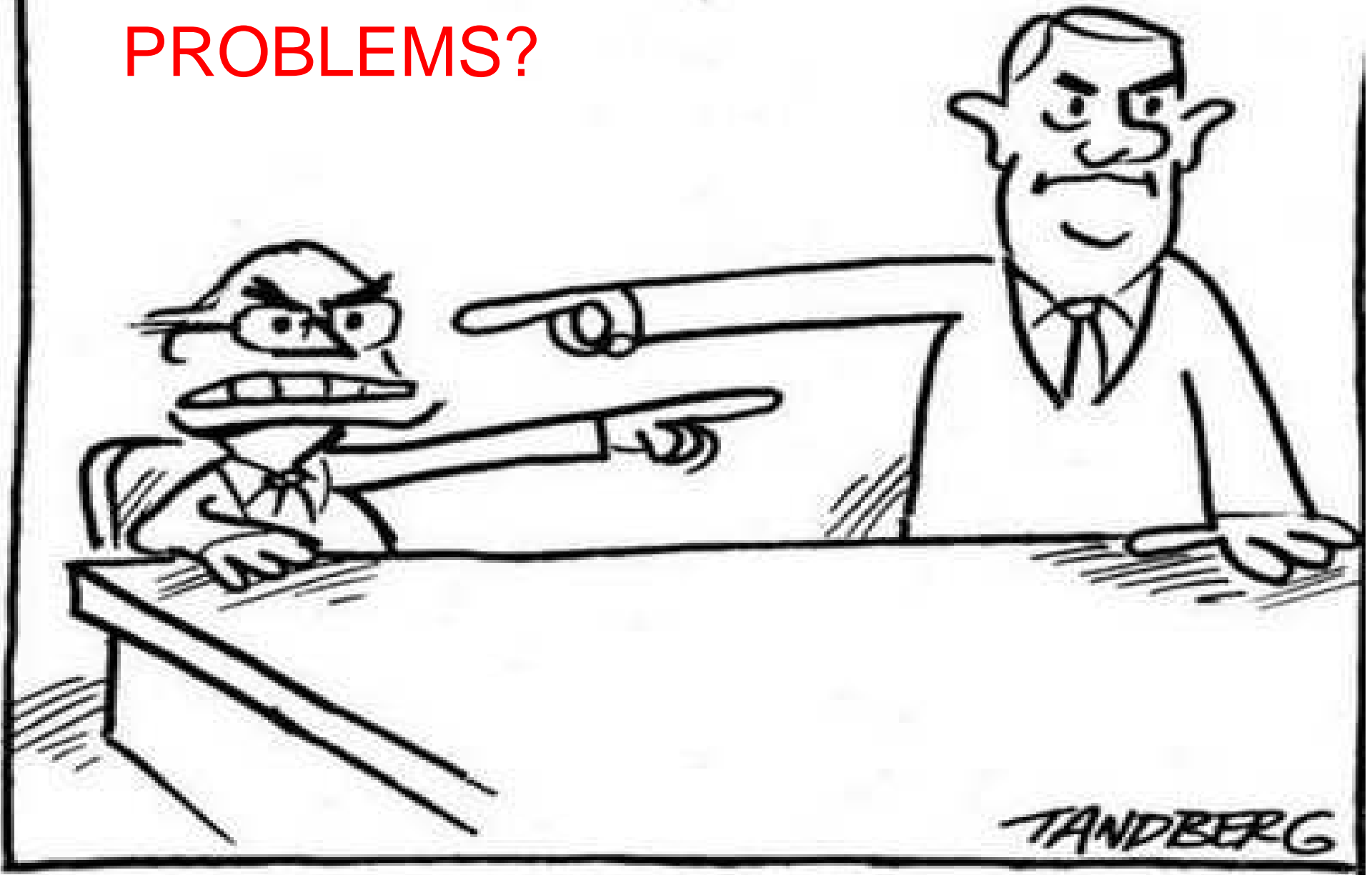








HOW DO YOU ADDRESS PROBLEMS?



LOWER YOUR TAIL
AND BACK AWAY
FROM THE STREAM!

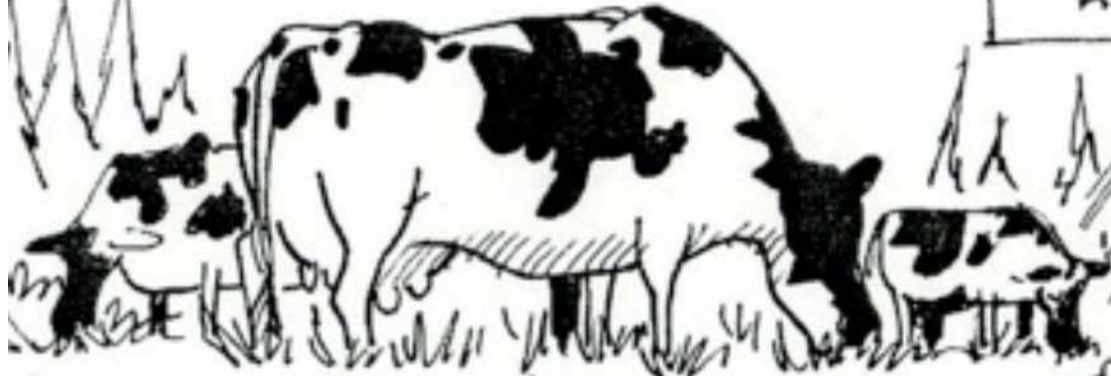


SUDDICK



Work
Individually
With
Landowners

OKAY, IF I'M SO FULL OF IT, TAKE A DRINK.



Handwritten signature and text: "Handwritten @00 The Secret..."

RESPONSIBILITY - Stewardship





What type practices were used to improve and protect water quality?

AGRICULTURE

Riparian Forest Buffers, Pasture Planting, Cross Fencing and Fencing of Streams, Stream Crossings

Residents

Work with residents on issues regarding erosion, septic tanks, fertilizer, chemicals, etc.

An aerial photograph showing a dense, dark green forest strip running through a landscape of agricultural fields. The fields are in various shades of green and brown, indicating different crops or stages of growth. The forest strip is a prominent feature, likely a riparian buffer. The text is overlaid on the image.

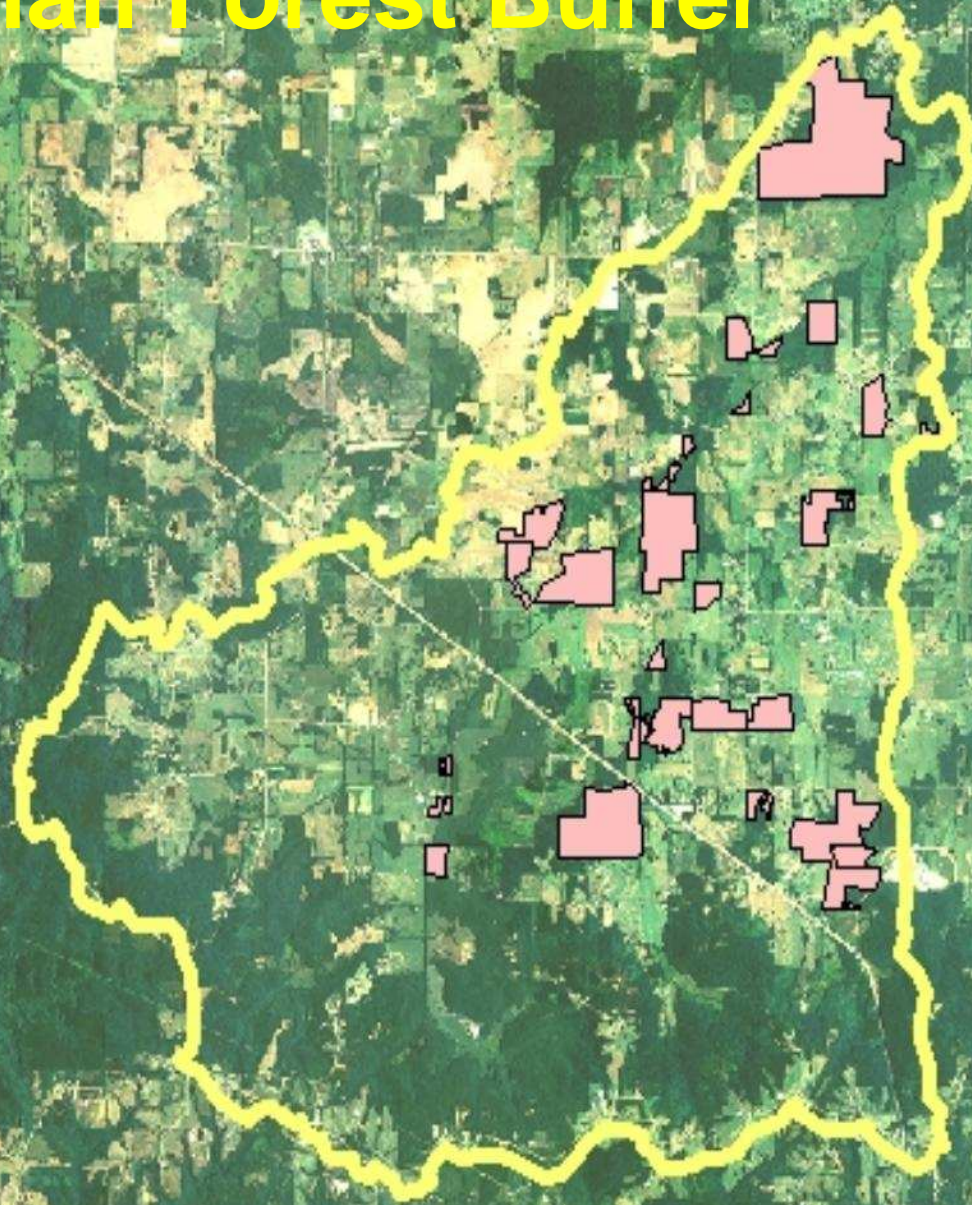
Riparian Forest Buffer

Farm Service Agency Continuous
Conservation Reserve Program
(CCRP)

1594.5 acres planted along
Crowdabout Creek

360.6 acres planted along Herrin
Creek

Riparian Forest Buffer



How to Convince Landowners?

Combined 319 funds with FSA
funds to raise incentive
payments to **\$500** per acre to
enroll

Improve wildlife habitat



2005



2015



2007



2015



2007



2015



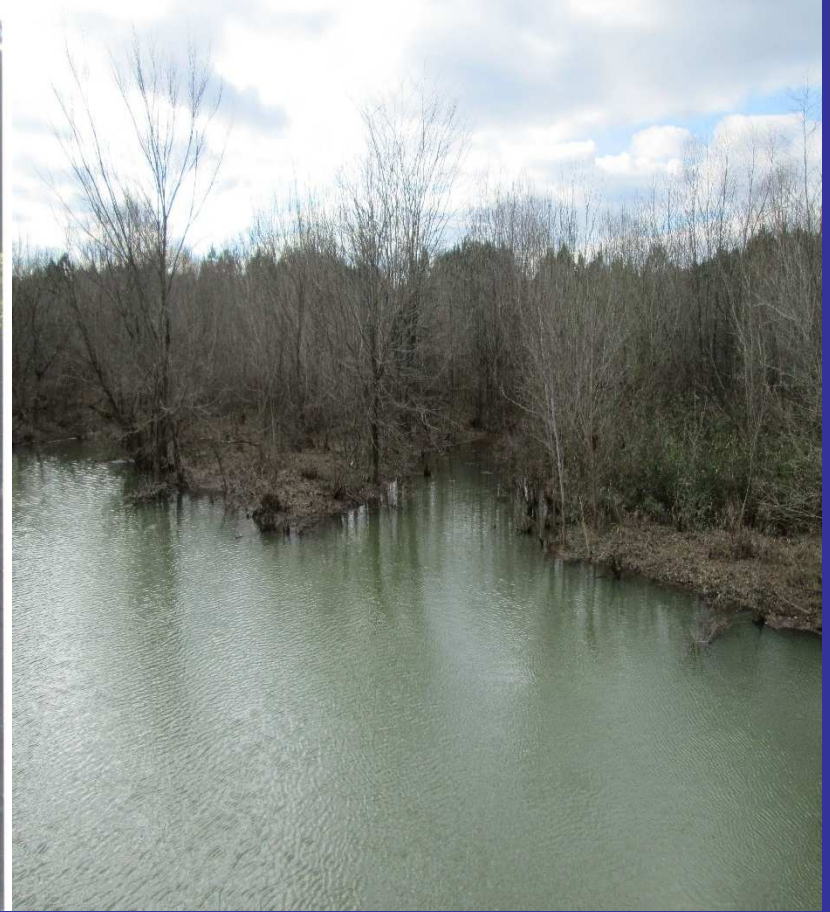
2007



2011



2005



2015



Has Water Quality
Improved?



Water Quality Data

Parameter	GSA 1996	ADEM 2009
Temperature	25.0	24.3
Turbidity	130.0	71.4
Total Dissolved Solids (mg/L)	187.0	140.0
Total Suspended Solids (mg/L)	37.0	13.5
Dissolved Oxygen (mg/L)	1.7	6.0
CBOD-5 (mg/L)	1.3	0.5
Ammonia Nitrogen (mg/L)	0.12	0.003
Total Kjeldahl Nitrogen (mg/L)	0.74	1.134



Water Quality Sampling Data:

Improved from a Category 4A stream (TMDL) to a Category 1 stream (waters are fine) for Organic Enrichment/Dissolved Oxygen

Habitat Assessment:

Improved from Poor to Fair from 1996 to 2009

Funding

- Crowdabout Creek

FY 2002 Clean Water Act 319 Grant

\$393,000 Federal - \$291,533 Matching

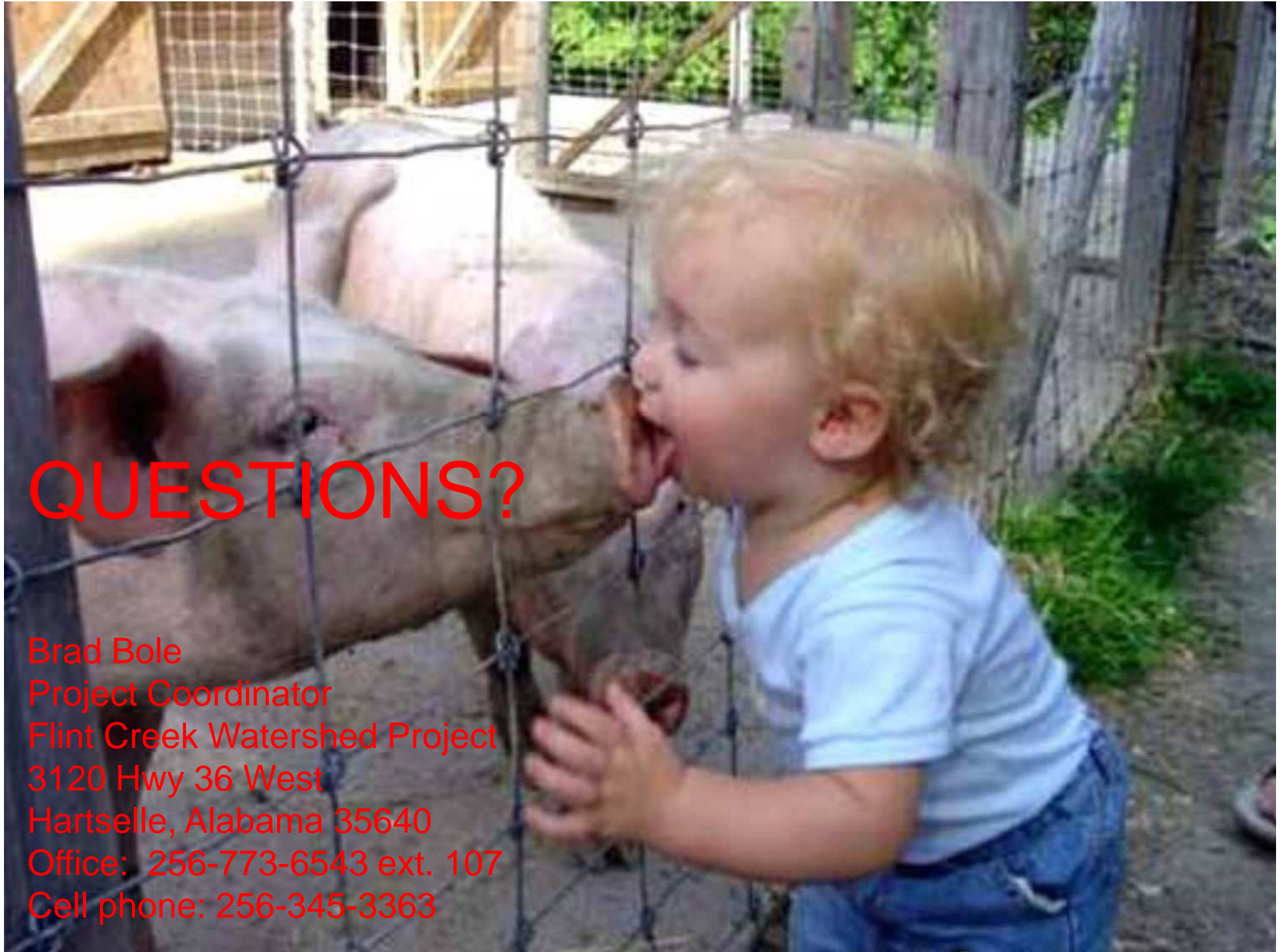
- Herrin Creek

FY 2003 Clean Water Act 319 Grant

\$63,426 Federal - \$42,769 Matching

Partners

Alabama Department of Environmental Management
Flint Creek Watershed Conservancy District
Natural Resource Conservation Service
Morgan County Soil and Water Conservation District
Tennessee Valley Authority
Farm Service Agency
Alabama Cooperative Extension System
Morgan County Commission
Environmental Protection Agency
Soil and Water Conservation Committee



QUESTIONS?

Brad Bole
Project Coordinator
Flint Creek Watershed Project
3120 Hwy 36 West
Hartselle, Alabama 35640
Office: 256-773-6543 ext. 107
Cell phone: 256-345-3363