

“To maintain and restore the physical, chemical and biological integrity of the nation’s waters...”



Chris Thomas
EPA Region 4
Sustainable
Communities &
Watersheds
Branch
404-562-9459
thomas.chris@epa.gov

Changing old roles and memes

Traditionally an Inward Focus

- Programs and policies
- Oversight
- Grants
- Client and focus primarily on State relationships



Supplementing with an Outward Focus

- Results
- Partnerships
- Help Communities Help Themselves
- Environmental Justice
- Climate Change Adaptation
- Client is also the Community

Vision

Region 4 Communities having the **Desire**
and the **Capacity** to:

1. Make informed decisions regarding sustainability of their water resources;
2. View EPA as a responsive & relevant partner; and,
3. Achieve water quality improvements.



Mission

We will administer assigned programs and provide or broker:

- a. Training**
- b. Information**
- c. Technical Support**
- d. Tools for Organizational Stability**
- e. Grants & contracts where available**
- f. Decision tools and assessments**
- g. Access or introductions to other federal programs or partners**
- h. Facilitation/mediation**

to internal, and external partners to realize our Vision...

8 Focus Communities

- Proctor Creek, Atlanta, GA
- *Birmingham, AL*
- Turkey Creek, MS
- Cherokee Nation, NC
- Pigeon River, NC/TN
- Chattahoochee River, GA
- *Selma to Montgomery, AL*
- Clinch/Powell, TN/VA/WVA



Birmingham

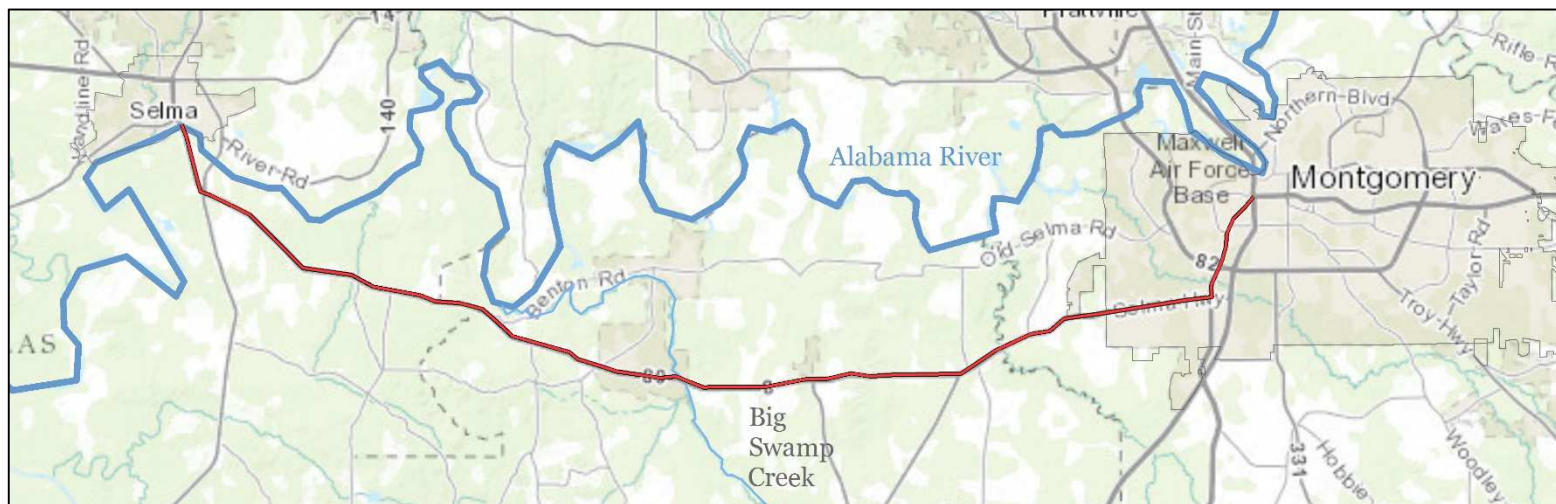
- EPA Regional Sustainability and Environmental Research Program (RESES) projects
 - EnviroAtlas and National Stormwater Calculator
- EPA Stormwater/Green Infrastructure Technical Assistance contract
 - “Strengthening the MS4 Program and Innovative Uses of Green Infrastructure for the City of Birmingham, Alabama.”

- Village Creek Watershed Management Plan

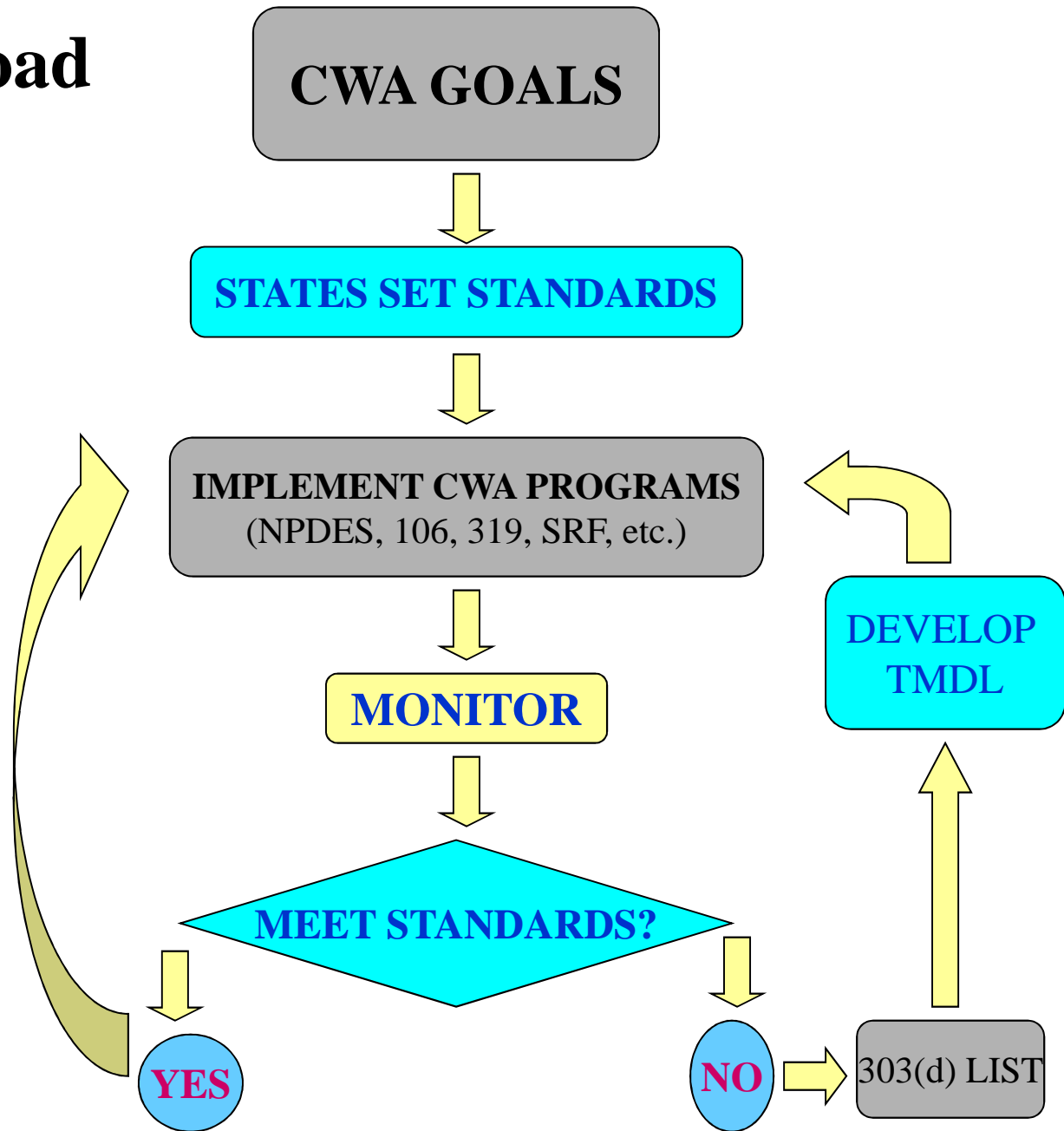


Selma to Montgomery

- EPA Water Infrastructure and Resiliency Finance Center's WaterCARE program technical assistance.
 - Selma wastewater utility planning.
- EPA Region 4 Water Protection Division engagement on sustainable onsite wastewater treatment in Lowndes County.
 - Water quality assessment of Big Swamp Creek.
 - Working with stakeholders to explore regulatory, technical, funding and programmatic solutions.



CWA Road Map

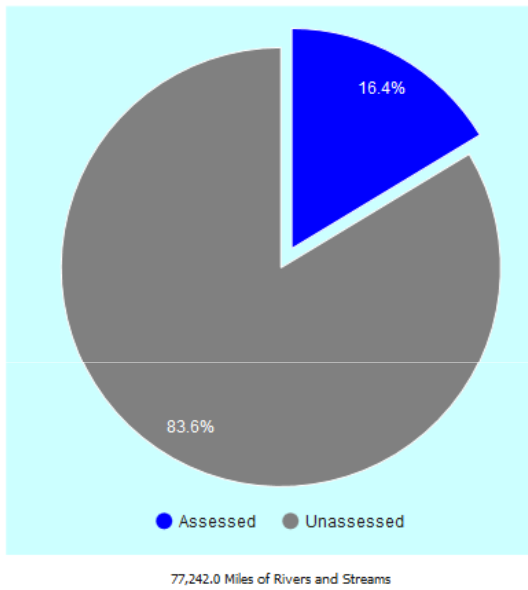


Alabama's Implementation Process

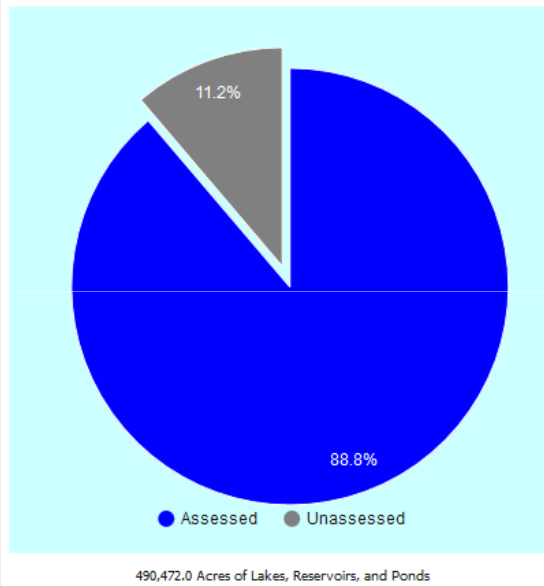


A Lot Left To Do

All Rivers and Streams

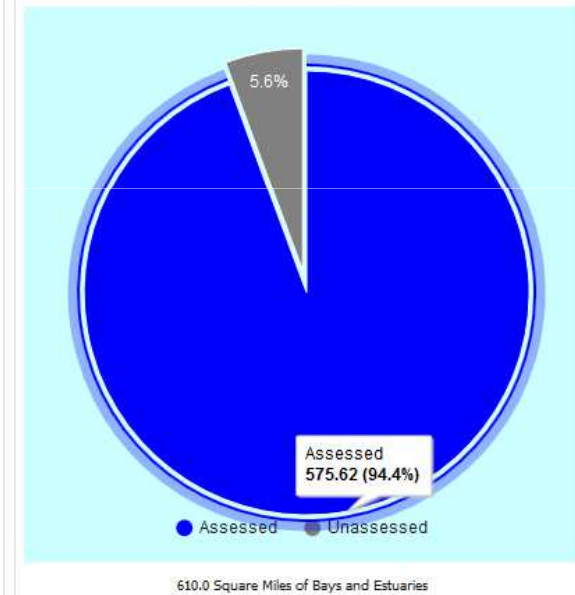


All Lakes, Reservoirs, and Ponds



<u>Assessed Status</u>	<u>Acres</u>
Assessed	435,384.3
Unassessed	55,087.8
Total Acres	490,472.0

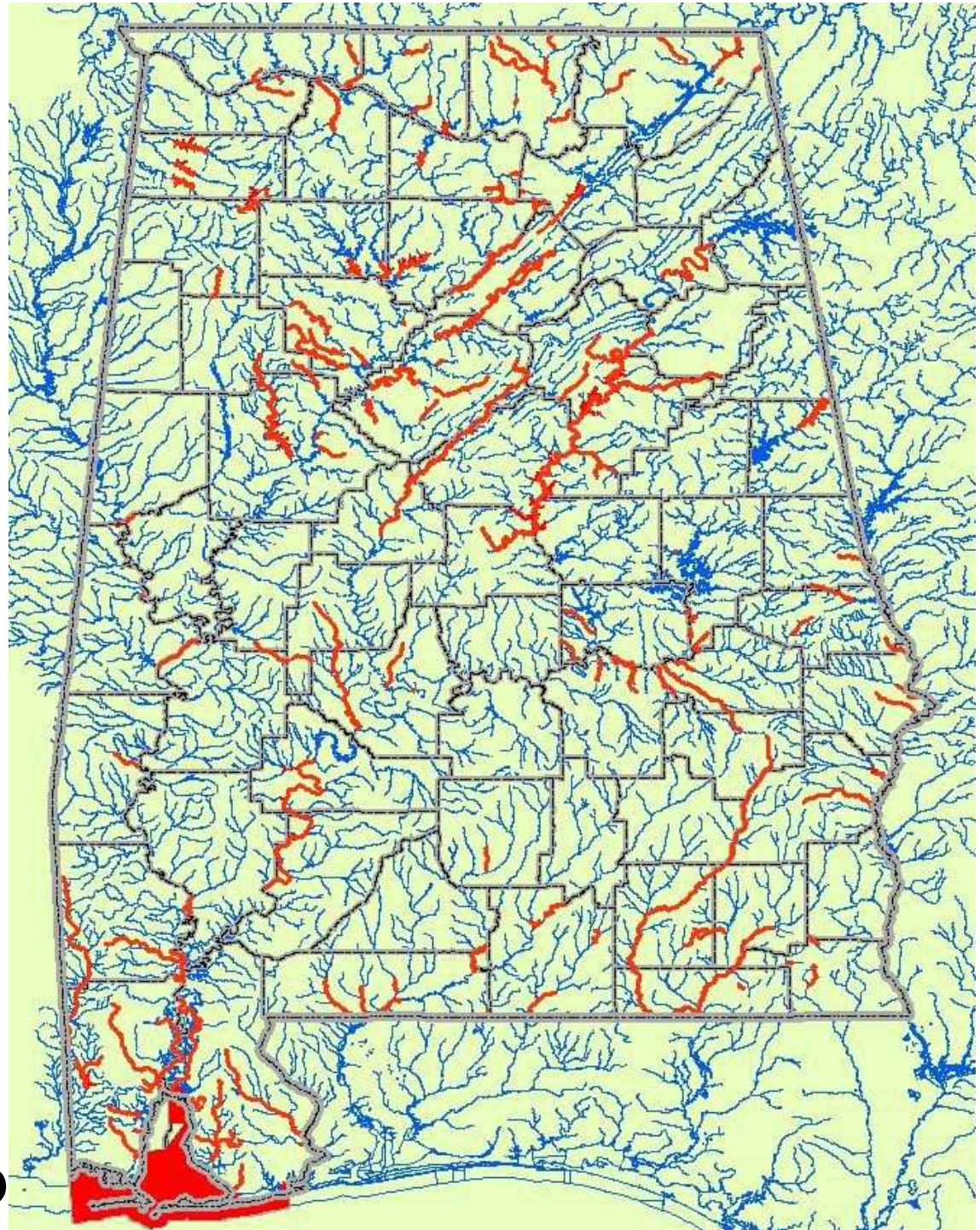
All Bays and Estuaries



<u>Assessed Status</u>	<u>Square Miles</u>
Assessed	575.6
Unassessed	34.4
Total Square Miles	610.0

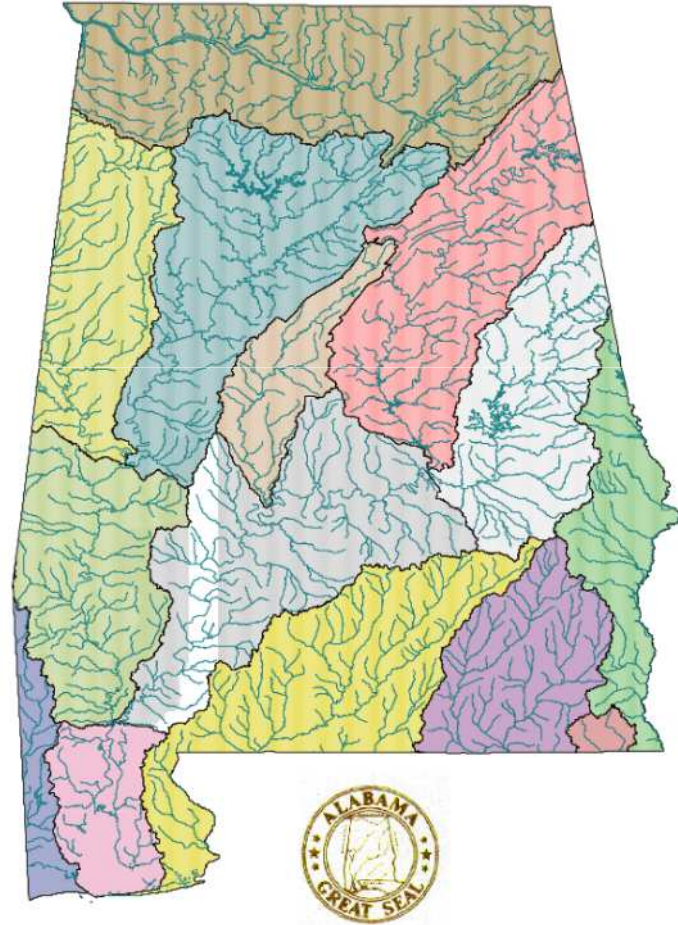
Alabama's Impaired Waters

2012 Map



Monitoring in Alabama

- 20 Industrial Monitoring Stations
- ADEM's Monitoring Strategy document builds on existing monitoring capabilities to address all state waters over time, including wetlands.
- No shortage of monitoring and assessment needs!



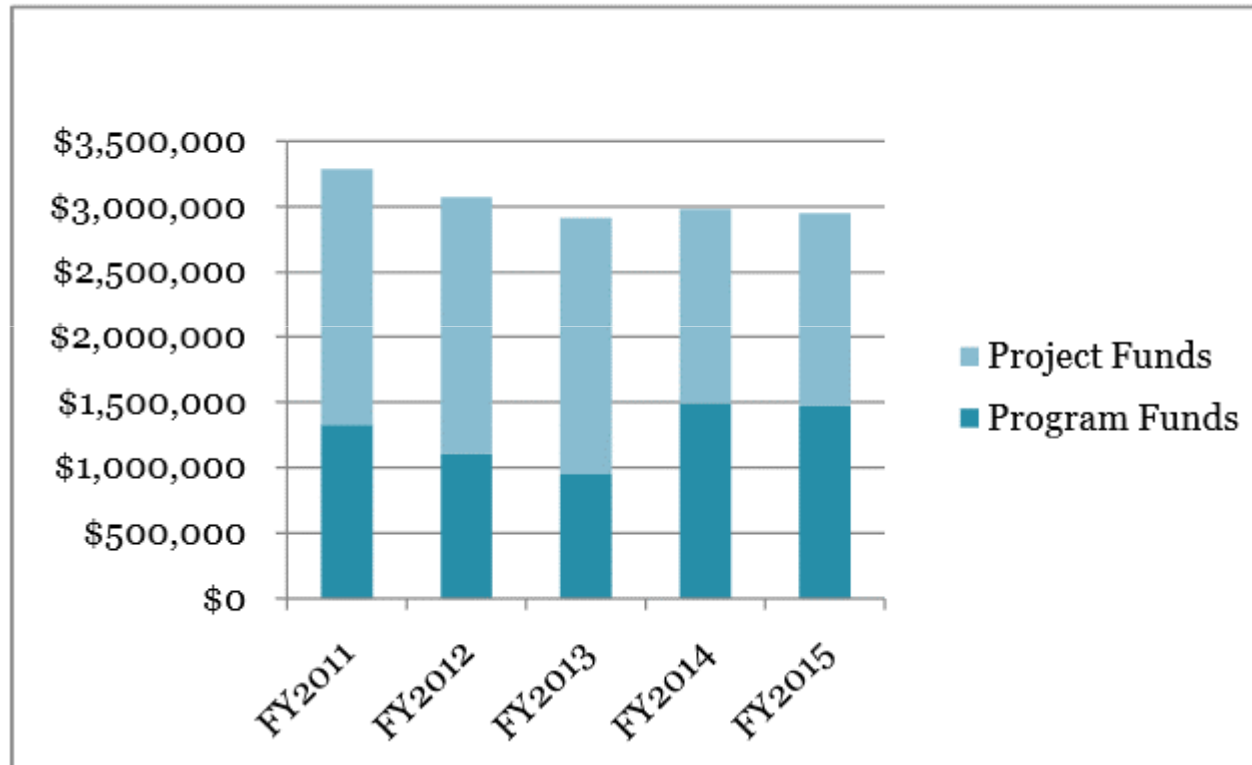
Measures Met=Congressional Funding

- SP-10/WQ-10
 - All impairments in waterbody have been restored/NPS investments contributed to “delisting”
- SP-12
 - 40% or more of the listed waters in a 12-digit USGS Hydrologic Unit were restored, or all waters were improved without deterioration in the rest of the watershed, due to the application of the Watershed Approach.

New NPS Incremental Measure

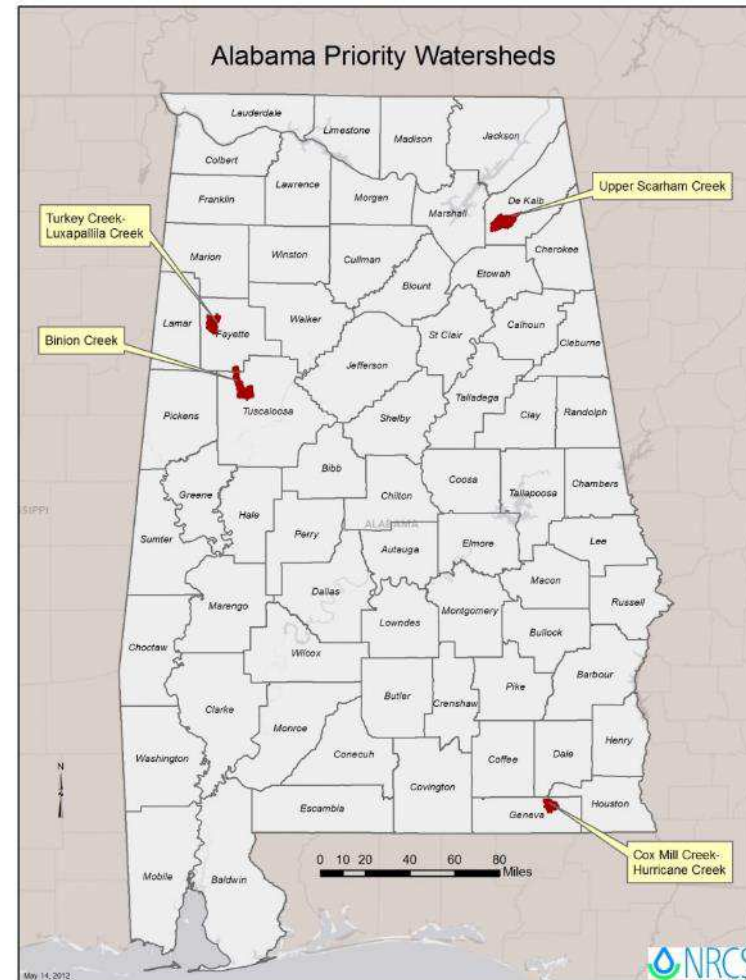
- WQ-10(a)
- SP-11/WQ-10(a)
 - One or more, **but not all** impairments have been restored/NPS investments contributed to “delisting.”
- First “delisting,” or group of “delistings” earn a WQ-10(a). Success story gets reported just like WQ-10.
- Subsequent “delistings” only require an “update.”
- Final “delisting” is a WQ-10.
- Measure expected in 2017; may attempt a trial in 2016 with an indicator measure.

Alabama NPS Investments



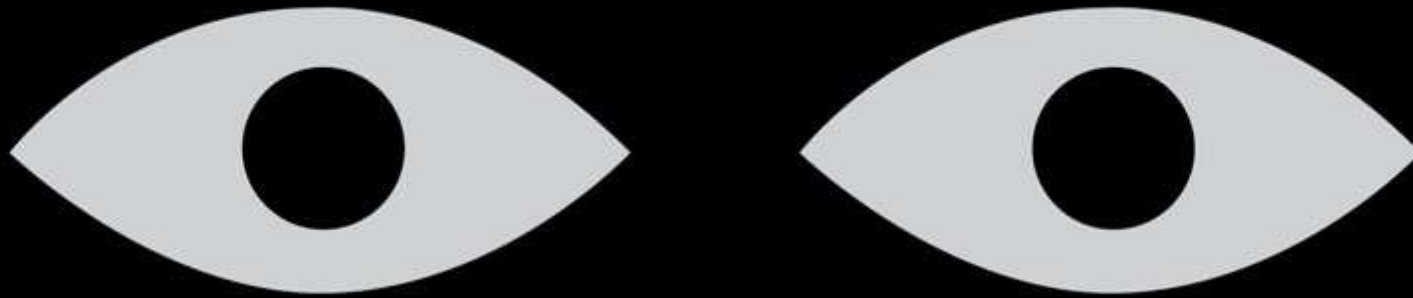
NWQI

National Water Quality Initiative (NWQI) in Alabama ADEM and the Alabama Clean Water Partnership (ACWP) are partnering with the Natural Resources Conservation Service (NRCS) as part of the National Water Quality Initiative to **target Cox Mill-Hurricane Creek (03140201-1004) within the Choctawhatchee River Basin in south Alabama.** The Alabama Clean Water Partnership worked with NRCS to assist in selecting priority watersheds where on-farm conservation investments will deliver the greatest water quality improvement benefits. The NRCS is providing funding for the implementation practices, in addition to providing technical assistance and planning tools. **ADEM will provide monitoring of water quality** and assess results to document improvements.



We Need You to Help Us Support You!

- Monitoring of Baselines and Results
 - Watershed Projects
 - 9-element Watershed Plans should have baseline monitoring
 - Watershed Plan Implementation should include project monitoring to know if projects are having a positive WQ impact and when WQ targets are met.
 - NWQI Projects - Monitor
 - Heavy Congressional/OMB scrutiny
 - Lots of annual dollars at stake
 - BP/Horizon Dollars
 - Watershed Plans being developed in coastal watersheds by Mobile Bay NEP
 - Implementation includes baseline and success monitoring



BEING IN THE DARK IS A SPACE FULL OF POTENTIAL

